

ALICE

Technical information

top-office.cz



Quality standard

LST EN 16139:2013/AC:2013 (level 1)

10 year Warranty

See Warranty statement

Other documents available for this product

TOP OFFICE product care guide



Technical information

Types

Lounge chairs (1)
Sofas (2)
Modular system (3)
Poufs (4)

1



2



3



4



Base frames

- One seater base frame 640x640x80 mm;
- Two seater base frame 1280x640x80 mm;
- Three seater base frame 1920x640x80 mm;
- One seater curved base frame 45°, 1020x690x80 mm;
- Base frames are made from metal tubes 70x20x2 mm and 50x20x2 mm;
- Outer side of base frames are softened with foam HR5050 (48-51 kg/m³);
- Upholstery to the base frame attached with “Velcro” straps.

Legs

- Round wooden legs, lacquered and stained light grey or black ash solid wood, Ø48x256 mm with height adjustable plastic feet, (+10 mm). Seat height 420 mm (pricelist standard);
- Metal tube legs Ø30x263 mm with height adjustable plastic feet, (+10 mm). Seat height 420 mm (pricelist standard);
- Metal tube legs Ø30x293 mm with height adjustable plastic feet, (+10 mm). Seat height 450 mm (optional change).

Connecting brackets

- Armrest and backrest connecting brackets made of metal sheet (8 mm);
- Base frames connecting brackets (“U” shape) made of metal sheet (8 mm);
- Metal brackets for table connection (“L” shape) made of metal sheet (8 mm);
- High back sides connecting brackets made from plastic (PA66+15GF).

Seat cushion

- One seater square seat cushion 650x650x130 mm;
- One seater curved seat cushion 45°, 1030x710x130 mm;
- Made from PU foam (65-70 kg/m³);
- Upholstered with fabric;
- Sewed with soft round “Velcro” pads on the bottom;
- Seat cushions placed on MFC board, stuck with hard “Velcro” pads.

Back cushion

- One seater straight back cushion 650x420x200 mm;
- One seater curved 45° seat cushion 1070x420x200 mm;
- Made from PU foam (50 kg/m³);
- Upholstered with fabric;
- Back side sewed with soft “Velcro” strap.

Side armrests and backrests

- Internal metal frame molded with PU foam (70 kg/m³);
- Upholstered with fabric;
- Backrests with hard Velcro strap in front to bind with back cushion.

High back sides

- Internal metal frame molded with PU foam (100 kg/m³);
- Upholstered with fabric;
- Connected with zippers on the sides.

Armrest with power socket or USB charger

- Internal frame made of 15 mm chipboard;
- Covered with foam VB3842 (36-39 kg/m³); VB2240 (20-23 kg/m³);
- Upholstered with fabric;
- 1 AC power socket 100 – 230 V or USB fast charger (USB Type A+C, max 5,6A) (EU, UK, FR, US, CH), cable length – 3 m;
- Bottom base for positioning between seat cushions from metal sheet (3 mm).

Integrated tables

- Frame made of 18 mm MFC (melamine) with 1 mm ABS edging (640x640x200 mm);
- Height (above the ground) – 420 mm (the same as the seat cushion);
- 1 AC power socket 100 – 230 V or USB fast charger (USB Type A+C, max 5,6A) (EU, UK, FR, US, CH), cable length – 3 m; (integrated table with double power socket or USB fast charger).

Mobile table

- Table top – 16 mm MFC (500x400 mm) with 1 mm ABS edging;
- Under the table top – 8 mm metal plate;
- Vertical column tube (40x40x2) from powder coated metal;
- 8 mm metal base with 4 adhesive felt glides.

Must be ordered to complete the combination

Connecting brackets (2 pcs.) (1)

Must be ordered for each connection of two seaters in modular system combination.

Set of legs (2 pcs.) (2)

One set must be ordered for modular system combination. *

*If demanded seat height is 450 mm product must be ordered via customer support service. Only metal legs available:
G3E0011 (4 pcs.), G3E0012 (2 pcs.).

Optional

Integrated table with power socket or USB fast charger (1)

Armrest with power socket or USB fast charger (2)

MOBI or other coffee tables (3)

1



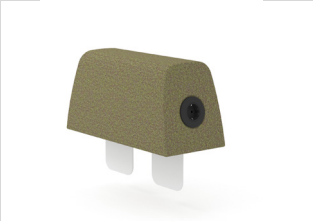
2



1



2

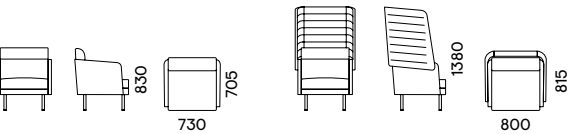


3

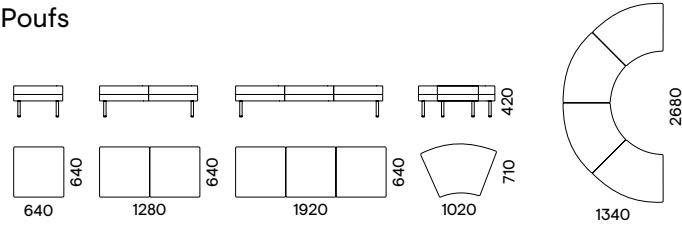


Range

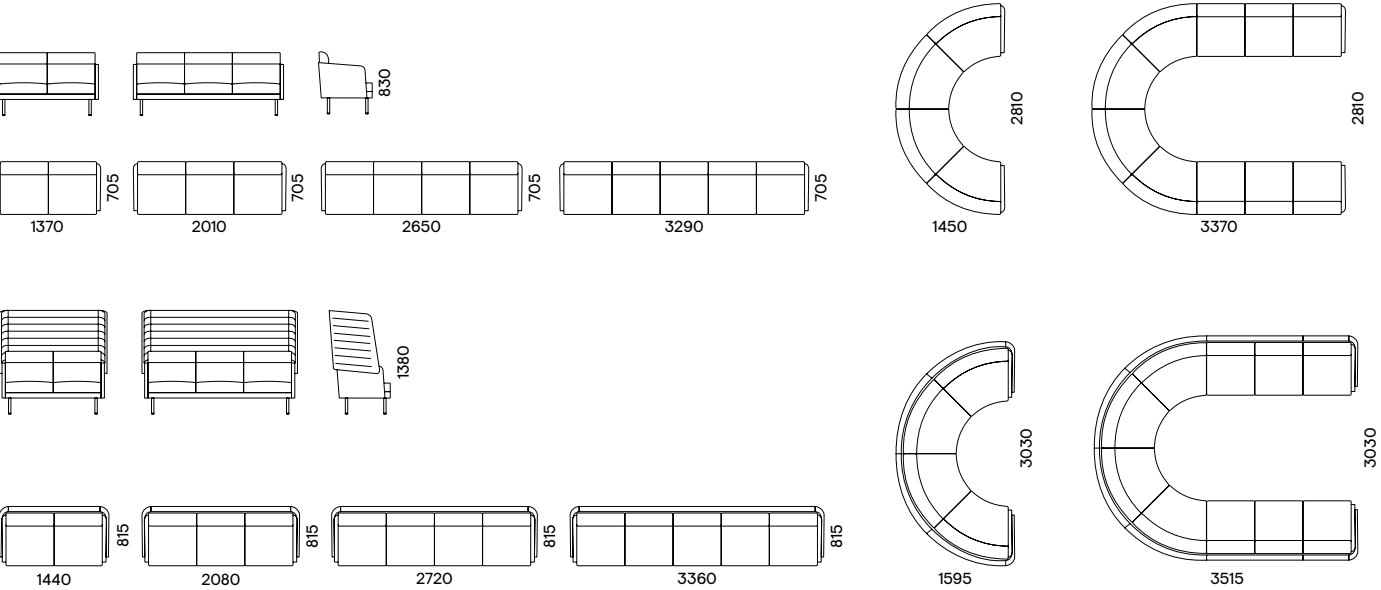
Lounge chairs



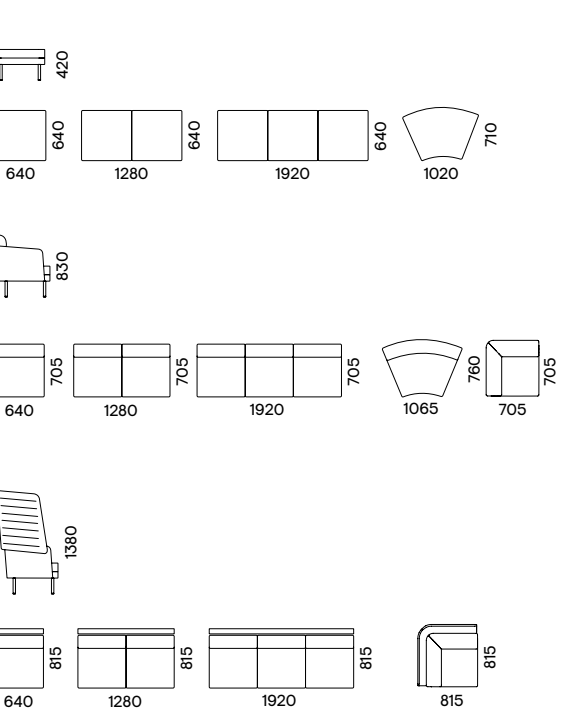
Poufs



Sofas

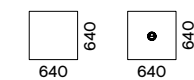


Modular system



Accessories

Integrated table



Armrest



Additional information

For combinations of poufs and low back seater segments:

- There are separate low back seater segments for the left side, right side, 90° corner and the centre. Poufs are universal and can be put on either side or in the middle.



right sided



left sided



central



90° corner



universal

- Poufs and low back seaters can be combined in any order. Combination can be ended or interrupted with a pouf.
- When ordering tables G2A0911, G2A0604, G2A0605, an additional set of legs must be ordered for each table.



- !
- Tables G2A0911, G2A0604, G2A0605 can be mounted only between two seaters, not at the end of the combination.

- !
- Two or more tables cannot be connected. There must be a seater segment between the tables.



- !
- When connecting curved segments only, at least 4 segments should be connected.



For combinations made of high back seater segments:

- There are separate high back seater segments for left side, right side, 90° corner and the centre.



right sided



left sided



90° corner



central

! —————

- High back combination must always end with two side segments (left and right).



! —————

- Tables G2A0911, G2A0604, G2A0605 are not compatible with high back combinations.

! —————

- Low back segments or poufs cannot be used in combination with high back units.



! —————

- High back curved combination must always end with two side segments (left and right) and have at least 4 of them in total.



Ordering legs and connecting brackets

Additional set of legs (2 pcs.) need to be ordered:

- To finish every combination;
- For every table G2A0911, G2A0604, G2A0605 used in the combination;
- If demanded seat height is 450 mm product must be ordered via customer support service, only metal legs available: G3E0011 (4 pcs.), G3E0012 (2 pcs.).



- A set of connecting brackets (2 pcs.) must be ordered for each connection between seater segments.



- Connecting brackets for accessories do not have to be ordered separately, all necessary connecting brackets are added to the accessory package.